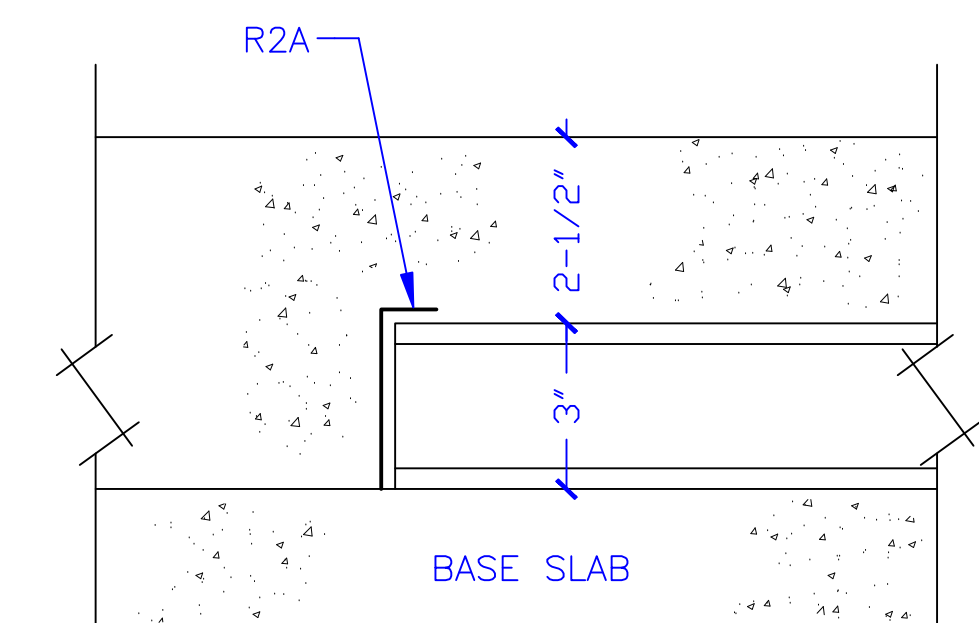


EXTRAS  
 BUNDLE #999  
 2pcs #999 @ 10'-0 LG

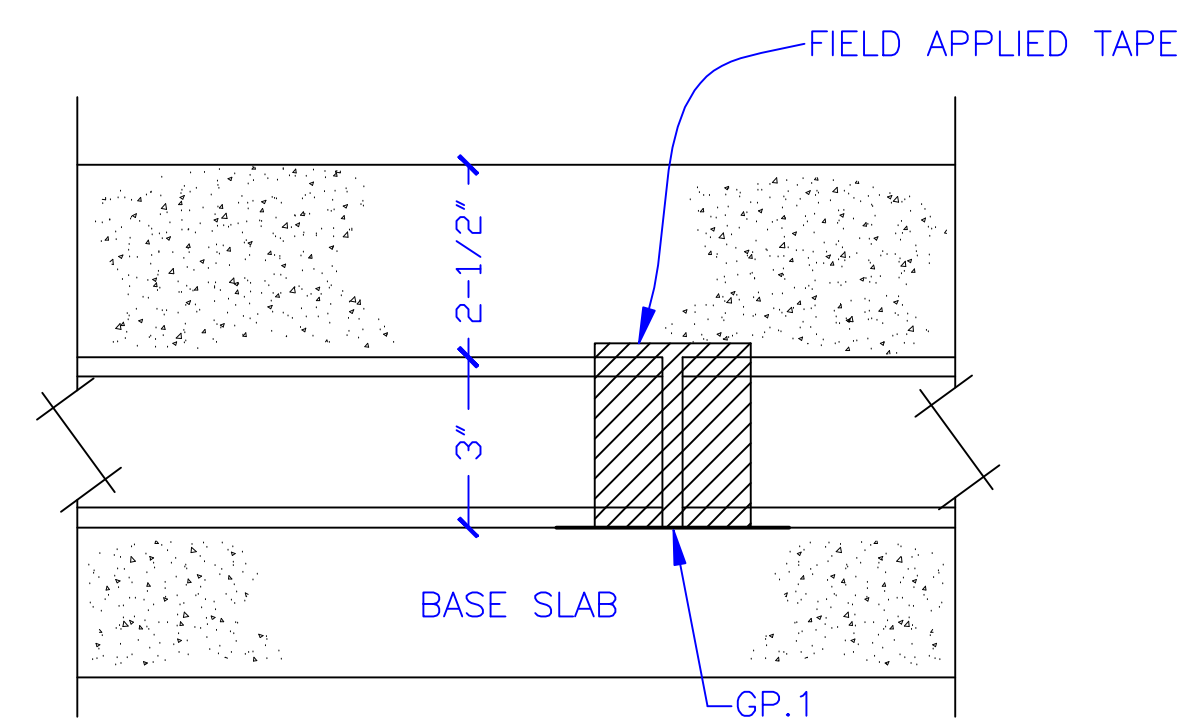
R2A = 30pcs  
 GP.1 = 30pcs  
 FILLER UNITS = 30pcs (24" WIDE)

FOR CONTINUATION  
 REFER TO SHEET E300

1"  
 3' x 2'-0 LG  
 R2A



TYPICAL END OF DECK DETAIL



TYPICAL BUTT JOINT DETAIL

○ INDICATES CELLULAR DECK BUNDLE #  
 (APPROX LANDING POSITION)

**1st FLOOR PLAN**

**SLAB CONST**  
 3" CONC FILL OVER 2 1/2" DEEP CELLULAR  
 FLOOR DECK = 5 1/2" TOTAL THICK SLAB

**MATERIAL**  
 20/20 GA QLGKXH 24 G90 GALV  
 (3" DEEP X 24" WIDE CELLULAR FLOOR DECK)

ISSUED	FOR FIELD USE	3/4/16	JEFF
ISSUED	FOR FINAL APPROVAL	2/9/16	JEFF
ISSUED	FOR APPROVAL	1/19/16	JEFF
REVISION		DATE	BY



Architect		Checked By:	
Contractor	PARSONS	Drawing Number:	EF-1
Owner	MANCHESTER POINT ARENA CASINO		
Building	1st FLOOR		
Fir / Elev.	POINT ARENA, CALIFORNIA		
Location			
Drawn By	JEFF		